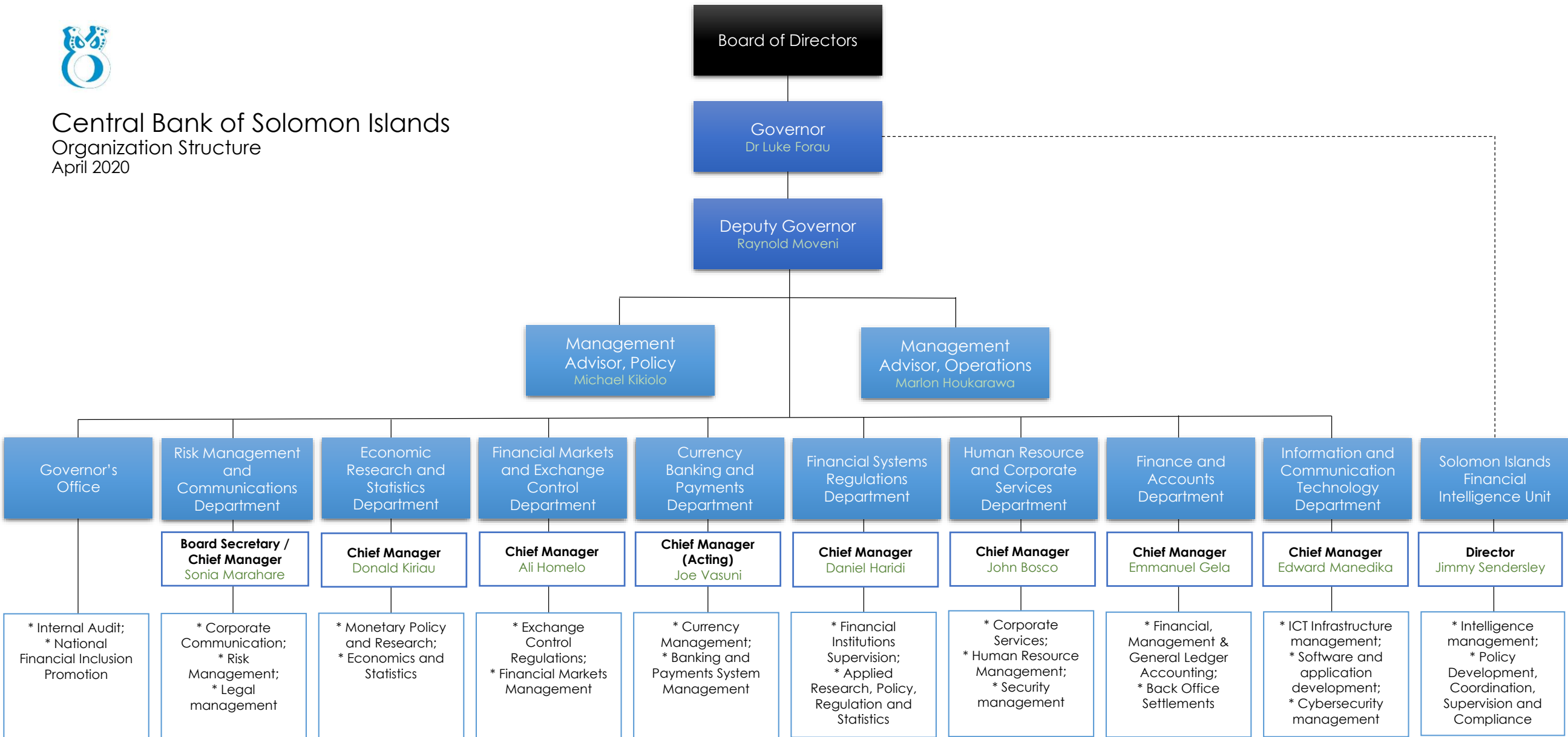




Central Bank of Solomon Islands  
 Organization Structure  
 April 2020



- Notes:**
- The **Internal Audit Unit** reports administratively to the Governor's Office and technically reports to the **Board Audit Committee**.
  - The **National Financial Inclusion Unit** reports administratively to the Governor's Office and technically reports to the **National Financial Inclusion Taskforce**.